

# 2022 Annual Report

BLUE HILL  
HERITAGE TRUST





Hans Carlson  
Executive Director

Earlier this month, I attended a day-long meeting of the New Hampshire Climate Action Working Group (CAW) and the Maine Climate Change Adaptation Providers Network (CAPP). These two groups have been working for years on climate issues in coastal northern New England, thinking about sea-level rise, its impact on both the environment and human infrastructure, and all aspects of community resilience in the face of climate change.

At this meeting, the topic was climate migration. While northern New England will certainly face serious implications from a changing climate, it also seems likely that we will benefit in some ways. Our

winters will be milder, growing seasons will be longer, and while we may get more severe weather than in the past, it will likely be less severe than other parts of the country. This means that people are likely to see our region as a better place to live and to move here from places like the southwest, gulf coast, and California. The meeting that day was devoted to thinking about how the states might prepare for and adapt to change in our communities, in our environment, and in our shared sense of place, in the face of likely migration.

One of the topics on the agenda was a climate migration and carrying capacity study for the peninsula that BHHT commissioned last year. In 2022, BHHT hired a consulting firm to quantify the in-migration we saw with Covid-19, and to use that as a thought experiment for considering climate migration. The report then began to sketch a framework for considering environmental and socio-economic carrying capacity on the Blue Hill peninsula. All of this was done to aid us in our conservation planning, but also to support towns in their thinking about the future, and this has put us at the leading edge of local engagement with this aspect of climate change. Members of CAW and CAPP wanted us to discuss our work.

We will present more later on this study, and the continuing work on this subject, but I mention it here because it is indicative of the kind of conservation thinking that BHHT is doing, in addition to our ongoing land conservation. To fully inform the work of protecting land in the context of climate change, we need to engage with our communities and be part of all their larger efforts. We are doing that, and I'm grateful that we have the capacity to do this work, as well as many other innovative activities here on the peninsula.

We have that capacity thanks to all of you who support us, and because we have talented and energetic staff who are fully committed to our mission. I've talked before about the conservation multiplier effect that comes with strong staff capacity, and this effect is both at the local and regional level. In the coming year, we will be adding to our staff talent, again adding to our strength in local land conservation and our leadership. I look forward to telling you all about the good work the Trust will be doing in the year to come.

Thank you all for being part of our efforts.



Hannah Webber  
Board President

When I was a kid, I spent a lot of my summers working in the garden—thinning, weeding, harvesting carrots so that in the winter my mum could send me to the root cellar to pull the carrots out of buckets of sand for dinner. Every little patch of land has a multiplicity of values; my parents put in a garden where there had been a garden before, and they cared for the land to provide for their family. Gardening work is hot work, it is sweaty work, and, it is the work of stewardship.

When we look across the rural landscape of the Blue Hill peninsula each patch of that landscape also has multiple values—intact habitat, carbon sink, a place to get a deer, firewood, blackberries, solace. How BHHT stewards its land depends on the balance of values. It is with constant awe that I watch the staff wrestle with balancing land protection, land use, resilience, traditional ecological knowledge, and fostering community to maintain our intact rural landscape. It's Sandy working with neighbor landowners, Landere working with teachers, Hans working with towns, George working with easement holders, Andrew leading volunteer crews, Chrissy working on accessibility, and Beth engaging with folks at the Farmers Market. It's hot work, it's sweaty work, it's the work of stewardship.

All of the staff, intern, and volunteer work, and our landscape, is precariously balanced atop a rapidly changing climate. How do we proactively care for the land as rain, snow and ocean patterns change, and species (humans included) move around; and how do we use land as a tool to counteract the changing climate and its effects? These are big and thorny questions, and it makes me proud that the staff at the Trust are leaning into the challenges of caring for the land. The care started 38 years ago. I am sure it was built on a relationship with the land then that was too important, too foundational to the community, to not commit to action. The staff today carry the responsibility of care, with care.

Our landscape is not all carrots, and there is no one-size-fits-all approach to stewardship.

Supporting the staff as they tussle with stewarding the land, for all of its values, has been an honor. When I see all of the other people around town with BHHT stickers, hats, t-shirts (especially the steward volunteer t-shirts), I have deep gratitude for all of those folks. When I meet the interns, their zeal is infectious. And to everyone not wearing BHHT on their sleeve, but holding a small patch of BHHT land in their hearts, you are all wonderful. Thank you all.

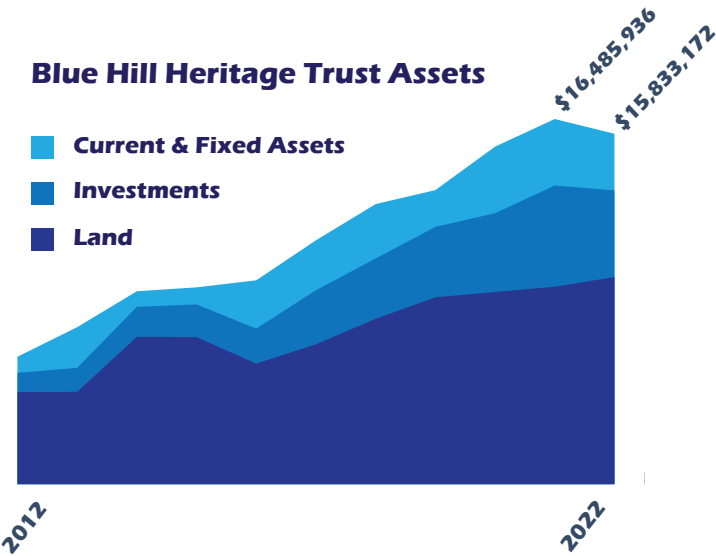




Blue Hill Heritage Trust protects land, water, and wildlife habitat on the peninsula, and provides public access to that land. This is one facet of our conservation work. Additionally, our land stewardship and educational programs promote ecological, economic, and community health in the name of conservation. Our responsibility is to build and care for community assets so future generations will benefit from a healthy land-base and enjoy the same deep sense of place and community that we all feel on this peninsula.

The focus of this review is the Trust’s financial health, but we would be remiss if we did not acknowledge first that our supporters make up the Trust’s greatest asset. Your care and loyalty are the foundation of our stewardship of all that is entrusted to our care. Without dedicated staff, energetic and caring volunteers, and loyal supporters, BHHT would not be the thriving organization it is, no matter its financial health. This will be even more true in the future, though financial capacity and stability will be key to successfully meeting the challenges of the next decade of conservation on the Blue Hill peninsula.

BHHT’s financial resources are all deployed to support the conservation mission. The following review focuses on the financial and land assets of the Trust which fall in three broad categories: conservation land; investment funds for the long-term care of those lands and the organization; current and fixed assets for near-term operations and conservation projects.

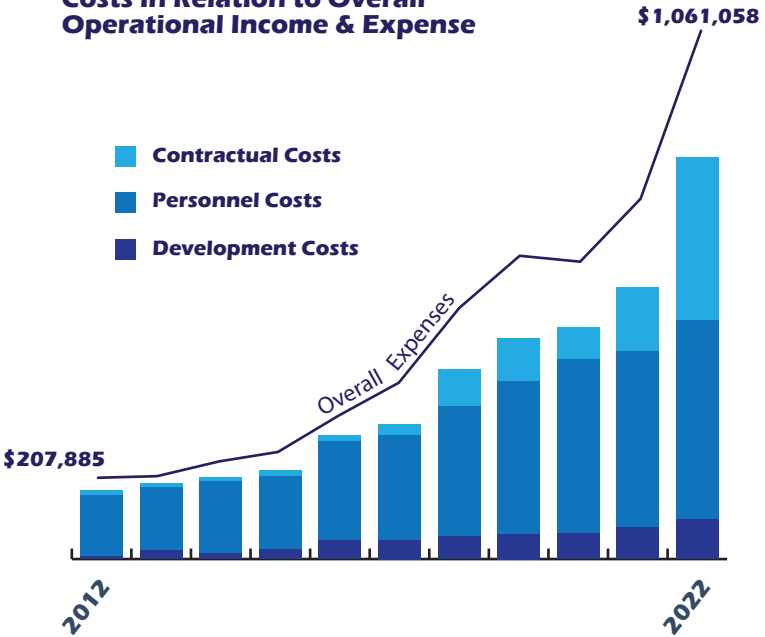


At the end of 2022, BHHT owned 8,116 acres of conservation land, valued at \$9,159,102. Audited land valuations here are based on appraisal at the time of acquisition and not current market value. Of the total valuation of Trust land, \$4,948,876 is fully restricted. This means that there are legal restrictions, largely held by state and federal grant funders, on our ownership. We could transfer this land to another conservation organization under those agreements, but we could not sell it. The other \$4,210,226 in land is restricted by our conservation mission, and donor wishes, but for accounting purposes is considered an unrestricted asset. Our 3761 acres of easements on peninsula lands are neither assets nor liabilities on the Trust’s books, though they are a long-term responsibility which takes financial and staff resources to fulfill.

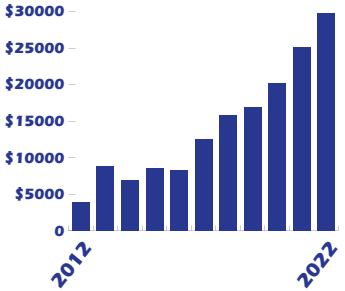
The Trust’s current and fixed assets at yearend 2022, not including the value of land, were \$2,503,762. Pledged donations accrue at the time of the pledge, and we had \$519,000 in pledged funds toward various projects at the end of 2022. We also held \$1,151,914 in restricted donations, to be expended in 2023 and beyond, for land purchases and projects. The remainder of our current and fixed assets were held in buildings and equipment, as well as \$210,981 for day-to-day 2023 operations. Despite turmoil in the market and apprehension around inflation, the overall financial picture is good.

At yearend 2022, BHHT had \$3,835,307 in investments. This was down from the \$4,476,561 reported last year and represents 2022’s negative adjustments in the market, a loss of 14% for BHHT. \$1,303,803 of those funds were donor restricted for the long-term stewardship of our conservation land, and another \$1,404,216 were board-designated for that same purpose. Monies restricted and designated in this way are held to keep our land open to the public, monitor that land to meet our fiduciary responsibility as a land trust, and pay annual property taxes. Our conservation promise is in perpetuity and these resources help us fulfill that promise. The rest of the invested funds are held to support operations at the Trust: the intern program; staff capacity to continue conserving land and serving our communities; general operations.

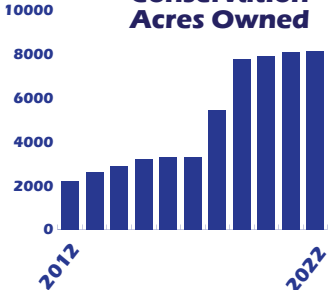
**Contractual, Personnel, and Development Costs in Relation to Overall Operational Income & Expense**



**Real Estate Taxes**



**Conservation Acres Owned**



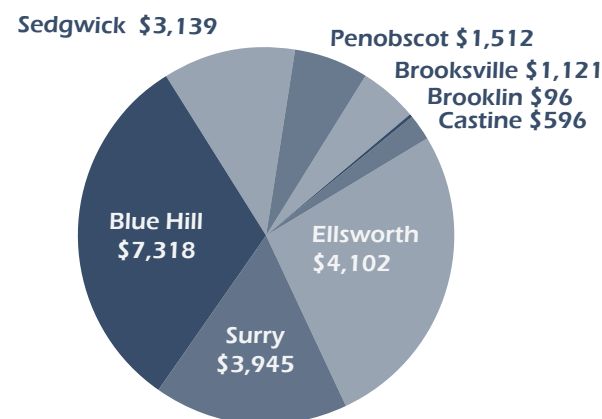
In the last decade, the Trust has grown, both in protected land and in the scope of conservation work it does on the peninsula. We continue to attract significant support from both private donors and granting organizations, all of which has made this expansion possible.

Personnel represents the most significant budget increase between 2012 and 2022, growing from \$146,852 to \$471,743. This represents a threefold increase, though as a percentage of overall budget, it represents a decrease from 71% to 45%. In a small way, this percentage decrease helps quantify the value added to conservation by people. BHHT can practice increased conservation because of its talented, energetic, and growing staff.

Other growth categories of note, beyond personal costs are contracts, real estate taxes, and development costs. Contracts, particularly stewardship contracts for large trail projects in the last three years, have increased costs. While these are all funded by restricted donations, they represent the most notable increase in the contractual budget category. Our purchase of large properties with road systems and bridges has also increased overall contractual expenses in their maintenance. We knew that these roads would need to be maintained for management purposes, but they have shown themselves to be important public resources for bikers, skiers, and walkers too. As a percentage of overall budget contracts have grown from 5% of the overall budget to 31% between 2012 and 2022.

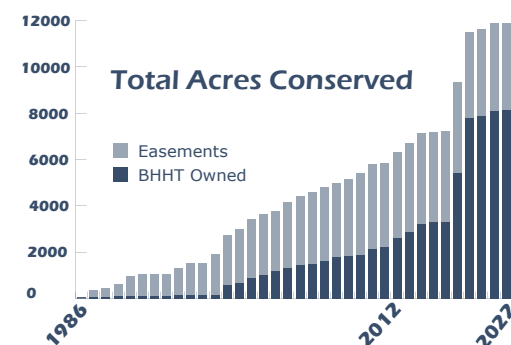


## 2022 Real Estate Taxes \$29,711



Real estate taxes have increased as our acreage has grown. Since 2012, we have increased our conservation land ownership from 2209 to 8116 acres. The appraised value of our conserved lands only doubled with the quadrupling of acreage, and this highlights the fact that conservation value is often decoupled from appraised market value. Our large forests, which make up two-thirds of the added acreage in the last ten years, have very high conservation value, but a dramatically lower per-acre value than other properties.

Real estate tax increases better capture the increased market value of our land. In 2012 BHHT paid \$3946 to our towns, and \$29,711 in 2022. This represents a sevenfold increase in tax payments, though as a percentage of budget the growth has only been from 2% to 4%. The Trust remains committed to lowering our tax burden through means available to all landowners but leaving our fee land on the tax rolls. Taxes will continue to be one of our more significant budget lines, growing as we add more land.



Development costs have risen over the last ten years as well. In 2012, BHHT spent \$6,167 to raise \$253,816; in 2022 we spent \$67,741 to raise \$1,028,704. Fundraising expenses are largely staff costs (In 2022, the Development Director and a percentage of the Executive Director's time). As a percentage of overall budget, development costs have only risen from 2% to 6% since 2012. As a percentage of funds raised, development costs have grown from 2% to 7%.

As a nonprofit organization, BHHT will always rely predominantly on donations, and expend funds toward their development. We are also working to increase our revenue in service to our conservation mission. In addition to donations and grant income, BHHT has annual revenue from leases, contracts, and merchandise sales. All these have grown in the last decade. Revenue income for 2022 was \$70,734, meeting 7% of budget expense. This is meaningful income, but it highlights the ongoing need for traditional fundraising as BHHT grows.

OVERALL INCOME <small>Including Income for Land Acquisition</small>	2020	2021	2022 <small>(Not yet audited)</small>
Unrestricted	\$319,961	\$546,367	\$616,146
Restricted	\$835,414	\$546,776	\$358,375
In-kind	\$335,000	\$13,209	\$14,250
Grants	\$680,683	\$627,500	\$46,646
Leases, Merchandise, Other	\$20,592	\$58,174	\$70,734
<b>Total</b>	<b>\$2,587,863</b>	<b>\$1,792,026</b>	<b>\$1,106,351</b>

Generally Accepted Accounting Practices (GAAP) now state that grants should not be booked until final administrative approval by the grantor, rather than at the time of initial pledge. This rule change has lowered our stated 2022 grants by \$729,000.

## 2021 AUDITED FINANCIAL POSITION

Liabilities & Net Assets (Including Land)

Unrestricted Assets	\$8,970,934
Assets with Donor Restrictions	\$7,337,706
Current & Long-term Liabilities	\$200,129
<b>Liabilities and Net Assets</b>	<b>\$16,508,769</b>

Each year the Trust has a financial audit conducted by an independent CPA. The Trust's fiscal year is the calendar year

From 2012 to 2021, the investment funds grew fivefold. This increase was driven by good management, a strong market, and several substantial gifts and bequests from supporters. Importantly, from a conservation standpoint, growth increased the invested assets as a percentage of conservation landholdings. Since these funds are largely dedicated to the long-term care of land, their increase from 21% of land value to 51% is a real success. 2022, was a negative year for the market and for our funds, but the long-term picture is positive.

## 2022 OPERATING EXPENSES

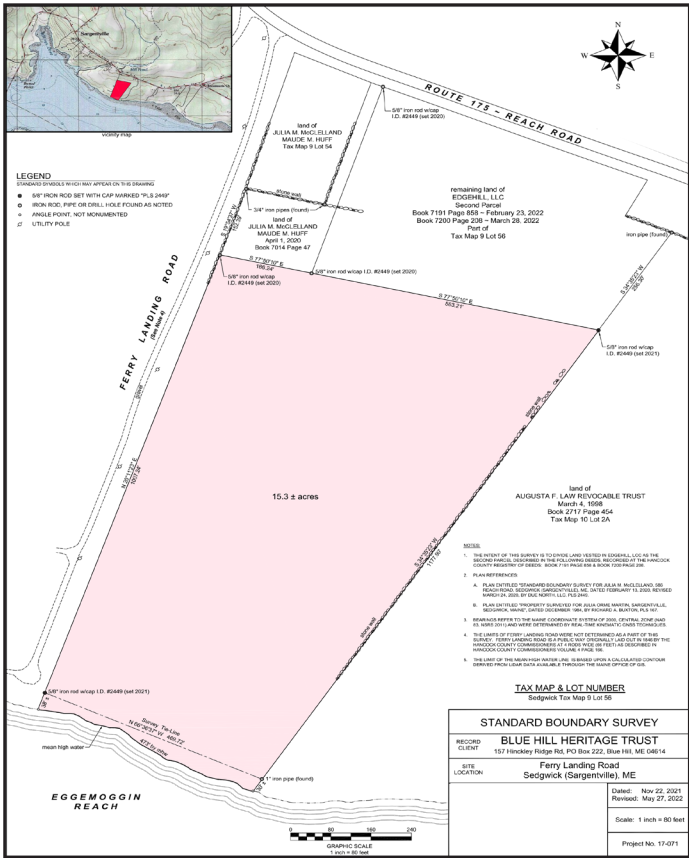
(Not yet audited)

Mission-related Operations	\$833,101
Management & Administration	\$160,216
Fundraising	\$67,741
<b>Total Operating Budget</b>	<b>\$1,061,158</b>

In the last ten years, the vision we have of ourselves as an organization, and the expectations of our communities, have grown greatly along with the specific work the Trust does. What looked and felt like a "going concern" ten years ago would likely feel unsatisfactory today. The scope of work has changed, as have the needs of our communities. We are still very much in the middle of a growth phase to meet these new challenges, and we thank you for all that you do to support our efforts.







In July 2022, BHHT completed the purchase of 15 acres on Eggemoggin Reach from Edgehill, LLC, a family group with multi-generational ties to the Blue Hill peninsula. This property has nearly 500 feet of shoreline, east of the town boat launch on Ferry Road in Sargentville, to which the family had never restricted access. They wanted to sell the property, but felt strongly that this access should not be restricted, and so they came to the Trust. It took several years to raise the money and work out the details, but this land is now permanently protected.

The project was funded by both Land for Maine’s Future and the North American Wetland Conservation Act (NAWCA), as well as private donations. To satisfy the granting agencies, an old camp structure had to be removed which required building an access road for machinery. The beginning of this road became the new parking lot for the property and we are developing another all-access trail on the remainder of it.

This summer and fall we will be completing a packed gravel trail that will wind through the woods and end at the bluff that overlooks the Reach. This will be a place where people of all ages and abilities will be able to spend some time enjoying the view of one of the most beautiful and iconic bodies of water in downeast Maine. We also eventually plan to build a regular walking trail loop through the woods as well.

This property will be a wonderful community resource and we want to extend our gratitude to the Edgehill family for their conservation leadership and for their patience in working through the process with us. Public shoreline access is a priority for both BHHT and peninsula towns, undeveloped shore-land habitat is also a high priority, and this property addresses both of these needs. Working with us to conserve the land was both environmentally forward thinking and community minded.

We hope that everyone will take the opportunity to visit this property in the years to come, enjoy the view, and feel grateful for the community of people we live in that values these things. We conserve special places for the future and we rely on people with vision to partner with us.

In summer 2017, we wrote a grant to Land for Maine’s Future for the expansion of Cooper Farm at Caterpillar Hill. This proposal included developing an all-access trail that would link our existing property with the one we were trying to acquire. We did this with our aging community members in mind, hoping to offer a resource for those who were no longer comfortable on our hiking trails at Cooper Farm. At the same time, and for the same reasons, we were planning what became the John Murphy Trail in Blue Hill.

That December, we began collaborating with an organization called Speaking Up For Us, a nonprofit serving and run by people with developmental challenges. Through this we began to develop an understanding of the both the challenges that other people face in accessing nature and the deep desire they have to be able to enjoy the outdoors like everyone else enjoys it.

This was the beginning of a now six-year engagement by BHHT to expand access on some properties for people who are no longer comfortable on trails or who rely on wheels, whether those be on a wheelchair or a stroller. With the help of our Accessibility Advisory Committee, made up of community members, we assessed our trails for improvement. With the help of many donors, private foundations, and government grants we have built a number of accessible trails on our properties.

In 2022, we opened an accessible loop at Hundred Acre Wood, in Brooklin, as well as a packed gravel path as part of the Mill Stream alewife fishway project in Brooksville. Both offer an chance to enjoy a woodland path and immerse in nature. We also, after Covid delays



and other issues, completed most of the work on that original trail at Cooper Farm.

This summer, we will open the Peter Clapp Trail which meanders through the blueberry field at Caterpillar Hill. There will be resting areas with picnic tables and a viewing station at the end to take in the entire view.

Our goal in providing expanded access is to be inclusive in the resources we provide to our communities. The pandemic helped us see that our trails and our properties are not just aesthetic and recreational resources, but very much a part of the public health infrastructure on the peninsula. Framed this way, expanding access is a responsibility for any public organization like ours. We hope you will get out and enjoy them.



Edgehill Conservation Area



The Peter Clapp Trail at Cooper Farm



8

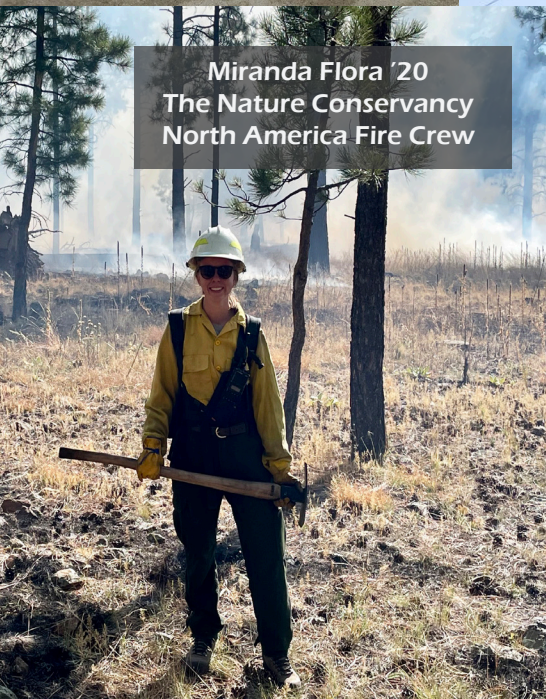




**Andrew Czwakiel '20**  
BHHT Staff



**Apple Lieser '22**  
Whitman College  
Senior



**Miranda Flora '20**  
The Nature Conservancy  
North America Fire Crew



**Maitland Ianiri '18**  
San Anselmo Montessori School  
Garden Teacher



**Morgan Zenter '19**  
Bass Pro Foundation  
Conservation Grants Officer



In 2016, the Trust began hosting at least one intern each year, and we have run a dedicated intern program since summer 2017. Our goal is to give participants broad experience in nonprofit land conservation, as well as skills they can use professionally, whether they go into conservation work or a related field.

We have been lucky to attract some truly talented young people, who have gone on to a wide variety of jobs. Two of them are still in downeast Maine working in nonprofit conservation, Soren for Maine Coast Heritage Trust and Andrew for BHHT. Tom is volunteering with a nonprofit focused on protecting Alpine Lake Fisheries. Devon is a backcountry ranger and spent this last summer in Mt. Rannier National Park. Edouard is managing Fitwel certifications for Clark Construction, helping create carbon reduction strategies for the company. Maitlin works at the nature-based San Anselmo Montessori School in Marin County, California, connecting children with their food, communities, and the natural world. Morgan is supporting conservation projects across the country through grant funding at the Bass Pro Foundation. Miranda coordinates training for hundreds of prescribed fire practitioners on private, public, and tribal lands for TNC. Merrin is studying Marine Conservation in Kino Bay, Sonora, Mexico, capturing sea turtles and recording data, before tagging and releasing them back into the ocean. Jessica is the Social Media Assistant for the Office of Sustainability at Slippery Rock University and will be working with Americorp after graduation. Apple, Emily, and Hayley from last summer are all finishing their studies in environmental policy and resource management.

We are giving young conservationists an opportunity to learn and provide the profession the future talent it needs to do the work we all care about so deeply. If you are inspired by these young people, please support the James W. Dow Intern Program and the endowment we are building for it.

To learn more, go to: <https://bluehillheritagetrust.org/james-w-dow-internship-program/>



**Soren Denlinger '19**  
MCHT Staff



**Emily O'Brien '22**  
Connecticut College  
Junior



**Edouard Beardsley '18**  
Clark Construction  
Sustainability Engineer



**Jessica Crandell '21**  
Slippery Rock University  
Senior



**Tom Fast '16**  
StreamNative  
Staff



**Hayley Gibbs '22**  
Paul Smith's College  
Junior



**Devon Funt '17**  
National Park Service  
Backcountry Ranger



**Merrin Brache '21**  
Prescott College  
Masters Marine Conservation

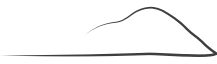




Chrissy Allen, Andrew Czwakiel, Hans Carlson, Landere Naisbitt, Beth Dickens, Sandy Walczyk, George Fields, Megan Flenniken (not pictured)

We’ve Grown, But We Still Couldn’t Do It Without Our Dedicated Volunteers

- |                       |                                  |   |
|-----------------------|----------------------------------|---|
| Aaron Glazer          | Mary Barnes                      | Ellen Gormley                                 |
| Barbara Kourajian     | Merrie Eley                      | Grant Platner                                 |
| Beverly Hawkins       | Nancy Morris                     | Sarah J King                                  |
| Bonnie Copper         | Nicholas Sichterman              | Sarah O'Malley                                |
| Brendon Reay          | Nickos Singelis                  | Susan Cottle                                  |
| Brooke Parish         | Nina Milliken                    | Susan Guilford                                |
| Bud Fisher            | Norman & Paula Mrozicki          | Susan Hand Shetterly                          |
| Bundy Boit            | Norman Alt                       | Terri Titcomb                                 |
| Christopher Austin    | Paul Kelly                       | Hannah and Colby from Way of the Earth School |
| David Chapman         | Peter Clapp                      | Jane Clifton                                  |
| David Chapman         | Phil Rapp                        | Jeff Beauchamp                                |
| David Porter          | Phyllis Taylor                   | Jessie Muhlin                                 |
| Douglas Cowan         | Randy Curtis                     | Jim Paruk                                     |
| Ellen Best            | Sally Mitchell                   | Kirsten Rickert                               |
| Ellen Hartford        | Samantha Haskell                 | Kristy Cunnane                                |
| Ena White             | Sandra Mitchell                  | Leann Brookes                                 |
| Friends of Morgan Bay | Terry Moulton                    | Lee Lee                                       |
| George Hurvitt        | Thomas Richardson                | Leslie Anderson                               |
| Greg LaClaire         | Tim Laflam                       | Lindi Gallup                                  |
| Hannah Webber         | Toby Wardwell                    | Longrie Christiansen                          |
| Hugh & Susan Curran   | Adam Chittenden                  | Mari Arnaud                                   |
| Jessica Dyer          | Adam Chittenden                  | Mark Froehly                                  |
| Jim Kannry            | Adie Allen                       | Marlaina Jones                                |
| Jim Lepper            | Amanda and Paul (King Hill Farm) | Mary-anne Saxl                                |
| Jo Barrett            | Andy Rosenthal                   | McKim Peterson                                |
| Joe Hermans           | Ann Humphrey                     | Michael Sheahan                               |
| Johanna Barrett       | Anne Bryan                       | Michelle Clark & Joel Brotherton              |
| John Boit             | Anne Hayes-Grillo                | Molly DelllaRoman                             |
| Jon & Peggy Hopkins   | Annie Guppy                      | Rob Cushman                                   |
| Kaiden Shaw           | Bailey Bowden                    | Russ Brookes                                  |
| Kate Tomkins          | Benjamin Lakin                   | Sarah Dodge                                   |
| Katherine O'Dell      | Birgit Frind                     | Sarah Hessler                                 |
| Kathleen Freedman     | Blaise deSibour                  | Sarah Pebworth                                |
| Katy Rossow           | Bob Erickson                     | Sherene Cauley                                |
| Ken Burgess           | C.J.Walke                        | Steve Fuller                                  |
| Kenzee Taylor         | Carol Leonards                   | Steve Ressel                                  |
| Kim Ridley            | Casey Bernard                    | Sue Shaw                                      |
| Kirsten Rickert       | Cathrine Moore                   | Susan Brookman                                |
| Larry Flood           | Charlie Baldwin                  | Suzanne Morse                                 |
| Leslie Clapp          | Cheryl Coffin                    | Tate Yoder                                    |
| Louis Schellhase      | Cheryl Coffin                    | Tim Garrity                                   |
| Lucas Allen           | Christine Hedges                 | Victoria Worth                                |
| Maggie Garfield       | Corwin Allen                     | Wes Barton                                    |
| Marcia A. McKeague    | Eleanor Bradford                 | William McArtor                               |



- |                                   |  |  |
|-----------------------------------|--|--|
| Adams School                      | Teach Peace Prints                     | Way of the Earth School                  |
| Ag Allies                         | The Bay School                         | WERU                                     |
| Arborvine & DeepWater Brewing Co. | The Blue Hill Co-op                    | Acadia Wildlife Center                   |
| Bagaduce Watershed Association    | USDA APHIS                             | Bar Harbor Bank and Trust                |
| Blue Hill Books                   | USDA NRCS                              | Blue Hill Country Club                   |
| Blue Hill Consolidated School     | USFWS                                  | Blue Hill Garden Club                    |
| Blue Hill Farmers Market          | Wild & Scenic Film Festival            | Blue Hill Peninsula Chamber of Commerce  |
| Blue Hill Public Library          | Wild Seed Project                      | Brooklin Garden Club                     |
| Blue Zee Farm                     | Chickadee Compost                      | Brooklin Inn                             |
| Brooklin School                   | Climate Change Institute               | Brooksville Free Public Library          |
| Brooksville School                | Estern Woodland Rematriation           | Bucks Harbor Market                      |
| Craig Brook Fish Hatchery         | East Blue Hill Library                 | Camden National Bank                     |
| Downeast Audubon                  | Frenchmen's Bay Conservancy            | Castine Yacht Club                       |
| Downeast Conservation Network     | Frenchman Bay Oyster Company           | Colloquy Downeast                        |
| Five Star Orchard and Nursery     | Great Pond Mountain Conservation Trust | Downeast Institute                       |
| Friends of Morgan Bay             | Island Readers & Writers               | Earth Watch                              |
| George Stevens Academy            | Maine Center for Coastal Fisheries     | El El Frijoles                           |
| Holbrook Island Sanctuary         | Maine Farmland Trust                   | First National Bank                      |
| Blue Hill Harbor School           | Maine Forest Service                   | Holbrook Island Sanctuary                |
| Healthy Peninsula                 | Maine Wabanaki REACH                   | Horsepower Farm                          |
| Island Heritage Trust             | MOFGA                                  | Keeping Track                            |
| King Hill Farm                    | Reversing Falls Sanctuary              | Lawrence Family Fitness Center Blue Hill |
| Know Your Land Consulting         | SEED Barn                              | YMCA                                     |
| Land Trust Alliance               | The Pacific Marine Mammal Center       | Maine Conservation Corp.                 |
| Maine Coast Heritage Trust        | Voices From the Barrens                | Nichols Day Camp                         |
| Maine Master Naturalists          | Witherle Memorial Library              | Northern Light Blue Hill Hospital        |
| MDIFW                             | Compass Rose Books                     | Old Ackley Farm                          |
| Native Gardens of Blue Hill       | Cynthia Winnings Gallery               | Parker Ridge                             |
| Nature Links                      | Downeast Salmon Federation             | Penobscot Alewife Committee              |
| Penobscot Community School        | Friend Memorial Library of Brooklin    | Quills End Farm                          |
| Rainbow Farm                      | Hancock County 4-H                     | Strong Brewing Company                   |
| Schoodic Institute                | Maine Trail Association                | The Gatherings                           |
| Sedgwick School                   | Mainescape Garden Shop                 | The Simmering Pot                        |
| Skip Lisle Beaver Decievers LLC.  | The Shaw Institute                     |  |
| Solidago School of Herbalism      |  |  |
| Surry Elementary School           |  |  |

Thank You!





2022 Heritage Society

<b>Visionary</b> <b>\$50,000 and up</b> Anahata Foundation	<b>Sustainer</b> <b>\$1,000-\$2,499</b> Tina & Jeff Allen* Lucy Ambach Leslie Anderson & Dan Nygaard Anonymous Robert Balaban & Victoria Hampshire* Daniel & Judith Ball Gary & Coleen Barbeau Wesley Barton Berkshire Taconic Community Foundation Laura & Rex Bohls Barbara Bramble* Frederick & Judith M. Buechner Mark Cahn & Jackie Frankfurt Bob & Carol Calder Hans Carlson & Johanna Barrett* Attie & Beau Carville* Dina & Dan Cassidy Peter & Sandy Clapp Clements Family Charitable Trust John & Anika Clements Robin Clements & Beth Gutcheon Tyler Clements & Lily King Camilla Cochrane Dr. Cheryl M. Coffin & Ralph Topham Jim & Joan Darby Ruth Davis Pamela Denlinger Virginia Drewry & Abby Martin Essex County Community Foundation Anne & Peter Gilchrist Terry & Sally Gray Grace & Bill Gregor Fred & Ellen Harris Samantha Haskell & Rob Cushman* Anonymous Nancy Hoppin William Hoynes & Deirdre Burns George Hurvitt Jonathan Ingham Ted & Anne Johnson Eric & Carol Judson Susan & John Kirk Judy Knight Joseph & Peter Lang Nicole Lawton Carolyn Leith Robin Lincoln Rob Loomis & Leslie Becker Steve & Jeanne Maritz Martha Martin Jim & Linda May David McDonald & Donald King Carol Merrifield* Lorenzo Mitchell Sally Mitchell & Crispin Spencer W. Tabb & Rosaline Moore Terry & Bebe Moulton* John & Elizabeth Murphy Gretchen Nagy & Allan Sandlin Lesla & Bill Netherton
<b>Leader</b> <b>\$25,000-\$49,999</b> Francis T. and Louise T. Nichols Foundation	
<b>Benefactor</b> <b>\$10,000-\$24,999</b> Wendy & Jack Brown Comeau Family Foundation Libby Georgitis Laurel Huber Jessie B. Cox Charitable Trust at the Boston Foundation Lisa Pirozzolo & Christopher Goddu Anonymous Cynthia Stroud The Acorn Brook Fund The John C & Katherine M. Morris Foundation	
<b>Patron</b> <b>\$5,000-\$9,999</b> Chris Baker & Jodie Ireland Mary Barnes & Peter Neill Henry & Jeannie Becton Julie & Bobby Cleveland Clevelands on the Cape Fund Dr. Douglas & Posie Cowan Malinda & Jon Curtis Blaise deSibour & Leslie Clapp John & Janan Eppig John & Janet Fuller Hartfield Foundation Mrs. Francis W. Hatch Charlotte Hill Charles & Ann Holland The Helen R. Buck Foundation The Taber Foundation	
<b>Sponsor</b> <b>\$2,500-\$4,999</b> Betsy Adams & Bob Murphy Norman & Maryann Alt* Christopher Austin & Marcia McKeague Donald Austin & Karolyn Ide Leonard & Elizabeth Buck Michelle Clark & Joel Brotherton Tyler & Courtney Cowan Randy & Callie Curtis William & Nina Doak Ben Emory Susan Fox Jon & Peggy Hopkins Jim & Marsha Kannry Sarah & Wilson King* James & Diane Lyon George Murnaghan Bruce Norelius & Landis Green Brooke & Julia Parish Anonymous*	

\* All-Seasons Givers

Debra Nygaard Diana Page & Oscar Ruiz* Liz & John Parish Dr. Burton W. Pearl & Linda M. Elder Tim & Barb Poole* Tom & Nancy Post Ron & Mary Pressman Michael & Lauren Prior Teresa Rankin Richard & Margery Read Susan Richardson Thomas & Joy Richardson* Andrew Rosenthal & Shari Levine Katy Rossow Philip & Elizabeth Ryan Ruth M. Ryan* Mary Allison Rylands Salem Foundation Martin Savalchak Bob & Bette Schmitt Christine & Brad Smith Kate Stookey & John Boit* Katherine E. Stookey Richard Storck & Aletha Langham Tony, Mary, & Miriam Talalay William & Phyllis Taylor* The Britton Fund The CARA Curtis Fund The Naskeag Fund Kate Tomkins & Frederic Viennot TradeWinds Marketplace Doris & William Webb Helen Weinland Lisa & Paul Welch Caroline G. Werth Williams Family Foundation
--

Project Sponsors

We also rely on supporters who fund individual projects: land, trails, and outreach programs.

Mary Barnes & Peter Neill Jeannie Becton James Dow & Ciona Ulbrich George & Pam Fields Mark Flora & Sally Stevens Henry & Jeannie Becton Susan Chambers Dr. Martin & Dr. Semena Curlik Fields Pond Foundation John Sage Foundation John Winthrop Jr. Endowment of Coastal Community Foundation of SC Graham & Michele Kinsman Margaret Micholet Steele James Nichols Patricia Sandilands Donald & Shelley Small The Windover Foundation Anonymous Anonymous
---

Thank You for Your Gift

Annual unrestricted giving is the financial cornerstone of all our work.		
Anahata Foundation Belvedere Natural Resources Preservation Fund of the Maine Community Foundation Elmina B Seawall Foundation Ben Emory Larry Flood & Tyler Knowles L.L. Bean Land Trust Grant Program Land Trust Alliance Maine Coast Heritage Trust Maine Community Foundation Morton-Kelly Charitable Trust National Resource Conservation Service Ocean Ledges Fund of the Maine Community Foundation Onion Foundation Quimby Family Foundation Hugh O. Stevenson Marc & Pam Heilner Anonymous William & Phyllis Taylor* USDA Peter Wardwell	Thomas & Marion Dillon Morris Jon & Kate Noel Anne S. Oldach & Bill Bickley Esther Parson & Stephen Strand David & Patty Persson Pryor Family Nigel Purvis & Susan Pacholski	Kathryn Rensenbrink & Jon McMillan John Ryan Cameron Skene* Michael & Linda Soukup Candace & Richard Stern

2022 Donors

<b>\$500-\$999</b> Adam & Helen Bliss Jessica Boger & Greg Rapawy Terry & Amy Britton Robert D. Broeksmit & Susan G. Bollendorf Susan & Steve Brookman Dr. Nicholas & Donna Constantinople Allan & Linda Currie Jim Dinnan Mary Beth & Frank Dorsey Downeast Chapter of Maine Audubon Society Denelle Drake* Wade & Virginia Duym Nancy & Charles Evans Todd & Sally Fonner Maynard Forbes Linda Genereux & Timur Galen Peter & Lucia Gill Case Tom & Gina Grogean Bente Hartmann Eliza Hill & Jonathan Hall Jennifer & Ben Johnson* Jeremy Kazan & Kendra Thulin Shelley & Jeff Kehl John Laterra & Amy Fulton Chauncy Lennon & Phoebe Roosevelt Gigi Leonard Christopher Lydon & Angela Definis Arthur Lynn* Mainescape Garden Shop John Manderson & Joyce Ferris Rob & Becky McCall* Michael & Joanna Melia
--

Every effort was made to ensure the accuracy of this list. If you find an error, please let us know, and accept our sincere apologies.



Thank You for Your Gift to Operations in 2022

Pamela Storm  
Xavier & Nina Teixido  
The Wilder - Guiles Family  
Mary Thomas  
Lisa & Rex Thors  
Marjorie Valdes  
Christine & Ian Whalley  
Anne & Fred Woodworth  
Ben & Mica Wootten  
Stefanie & Andrew Young  
David Ziff & Alan Bell

\$250-\$499

Mark Adams & Elle Smith-Troy  
Steve Antell & Barbara Leaf  
Alexandra Belinky\*  
Eric Bennett\*  
Thomas Bjorkman  
Blue Hill Hydraulics, Inc.\*  
Blue Hill Inn  
Andrew Bourne  
Kathleen Bower  
Elizabeth Bravo-Benson  
Alexandre H. Bravo  
Ann & Robert Bullock  
Ken & Kathy Burgess  
Carey Campbell  
Teo & Lindsey Canino  
John Carew\*  
Carl Gilley Landscape Design/Thrinax, Inc.  
Catherine H. Fisher Giving Fund  
Lynn Cheney  
Annie & Tony Chevalier  
Howard & Judith Chittenden  
Joan Clapp Allen & Eric Allen  
Colin and Francisca Thomas Helmer Charitable Fund  
Carroll S. Connard  
Emily Cushman & Peter Fallon

Christopher DeGraw & Terry Muilenburg  
Dethier Family, LLC  
Noah Dow  
Pamela Driesell & L. Joseph Loveland, Jr.,  
John F. Edwards  
Marcia Fenn  
Bruce Fowler & Teresa Myrwang  
Leda Beth Gray & David Drake\*  
Coleman Harding  
Jade & Joseph Hatheway\*  
Stephen & Kathleen Hayward  
Hanna & Kris Henderson  
Carol Herrmann  
Andrew Hikade & Annika Treyball\*  
Karen Hill  
Ellie & Paul Horwitz  
Keith Hutchison & Lucy Rowe  
Matthew & Catherine Hyde  
Toini & Carl Jaffe Charitable Fund  
James & Barbara Jaffray Jr.  
Char Joslin  
Drew & Becky Kellner  
Leaf and Anna LLC  
William & Christine Leith\*  
JoDee Lymburner  
William & Alexandra MacDowell\*  
Neil & Ellen Macneale  
Carl Malm & Debra Rager  
Richard Marx  
Thomas & Marcia Mason  
Vanessa Mitchell  
John Montana & Kristin Murphy  
Mary Murray  
Joyce Neiditz-Snow  
Joseph & Elizabeth Pacileo\*  
William Petersen & Susan Sharko  
Douglas & Lisa Petno  
Power Grippts USA  
John & Rebecca Randall  
Susan Ricker & Bill Zarakas

\* All-Seasons Givers

Phil & Rita Roberts\*  
Laurie & Jimmy Rokakis  
Frank & Jinx Roosevelt  
Saltmeadow Properties  
James & Bridget Saltonstall  
Thomas Schaub  
Jeff & Sharon Scheff  
Ingrid & Doug Scott\*  
Margaret Shaw Chernosky & Joseph Chernosky  
Curtis & Barbara Shaw  
Stuart Shaw  
Nicholas Sichterman & Mariah Hughes  
Anonymous  
Richard & Katrinka Sloan  
Sherry Streeter & Jon Wilson  
Emma Sweet\*  
Sarah & James Talalay  
Teichman Oehman Family Fund  
Elizabeth Tobiasson  
Jennifer & Andrew Traub  
Frances Von Mertens  
Chris Wanning  
Christian Warren\*  
Margaret Weinland  
Wellington Management Company, LLP  
Anonymous

\$100-\$249

Cliff Abrams & L.A. Bykowski  
Andres Abreu  
David & Elise Adams  
Leverett & Marlene Alcott  
Rick Alexander\*  
Astrid Anderson Dodds  
Rev. Arvid L. Anderson  
Betsy Armstrong  
Luna Armstrong  
David Asch & Lynn Cherry

Rich & Diane Audette  
Kevin Bach & Michelle Berger  
John E. & Lynn S. Baker  
Leda & Greg Ball  
John Barone  
William Barton & Marcia Wakeman  
Tony Beardsley  
Jeff Beauchamp\*  
Damian & Amy Bebell  
Ellen & Robert Beekman  
Benevity Inc  
Gregory & Ann Benz  
David & Marian Bicks  
Bight Funds  
Ruth Billings  
Birch Moon Midwifery\*  
Janet Bisset  
Holly Bixby  
Dorothea Black & Stephen Logowitz  
Temple & Victoria Blackwood  
Blue Hill Wine Shop  
Julie & Tom Boardman  
Bob & Bundy Boit  
Tom Bolmer & Ellyn Montgomery  
Chuck & Nancy Boothby  
Michael & Elizabeth Boucher  
Jennifer & Peter Bourgeois  
Jonathan & Sarah E Bourne  
Louise Taber Bourne  
Sarah P & Jim Bourne  
Bailey Bowden  
Gerry Brache & Merrill Slaven-Brache  
Barbara Bradley  
Curtis & Marina Brand  
Linda & James Breece  
Charles & Judy Brenton  
Sergei Breus  
Patricia Briska  
Marechal Brown  
Joseph Bruno & Rachel Armstrong  
Kathleen & James Burnett  
Jody Burr & Andrew Innes  
Peter & Debby Burt  
George & Jane Cain\*  
Rebecca Carino  
Barb & Charlie Casey  
Charles Casey  
Winter Casey  
Castine Kayak Adventures  
Sue Chen  
Caroline Chester  
Jim Church  
Julia Cluett & Bob Shepley  
Anonymous  
Claire and Sean Coleman  
Peter Colman & Hadley Friedman  
Merle & Bonnie Copper  
Sheila & Bill Corbett  
Susan M. Crawley\*  
Adam & Melinda Crippen  
Marnie & Ken Crowell  
James & Leila Day  
Windy Dayton\*

Aaron Desjarins  
Dethier Family  
Deborah Dethier  
Daniel Diadul  
John & Marcia Diamond\*  
David M. Dietrich  
David Dillon & Cynthia Winings  
Roger & Judith Doherty  
Richard & Brooke Dojny  
Michael Dougherty  
Brad & Priscilla duPont  
Steve Earl & Lynne Tempest  
Don & Merrie Eley  
Sam & Linda Emerson  
Robert Erickson\*  
Susan & Tim Farrar  
Robert Fast  
Tom Fast - 2016 Intern  
Elizabeth Ferry  
Bud Fisher & Barbara Kourajian  
Ann Flewelling & Charles Read  
Miranda Flora - 2020 Intern  
Haydee Foreman  
Lane Franz  
Furbush-Roberts Printing, Inc.  
Jacques & Rebecca Gagne  
Tom & Elaine Gagner  
Tim Garrity & Lynn Boulger  
Gay & Lesbian Fund of Vermont  
Juliet Geldi & Gavin Riggall\*  
Mary Gellerstedt & Gennaro Camelio  
Ginny Viall Gersch  
Sharon Giannatto\*  
Anonymous  
Carol & Dick Gregor  
Suzanne & Paul Griffin  
Ed & June Grinter  
Susan Guilford  
Annie Guppy & David Zachow\*  
Ara Guzelimian & Jan Clough  
Hamilton & Hilary Hadden  
Haley Ward, Inc  
Cynthia Hamilton & Chris Snowber  
Nancy & William Hanley  
Henry & Chris Harding  
Barbara Haring  
Gary & Susan Harmatz  
Leah & Jason Harp  
Dana & Howard Harrison  
David & Susie Hatch  
Richard & Karyl Hayes  
Frederick & Prudence Heilner  
Cynthia Henshaw  
Sean Heravi  
Joe Hermans  
Richard Hero & Jane C. Whitney  
Alan Hess  
Gary & Jo Hewitt  
Wallace W. & Sharron L. Hinckley  
Anonymous  
Don & Lee Holmes  
Stephanie Holmes & Colin Fay  
Rev. John K. & Carolyn Jane Hooper

Deborah Hopper  
Huckle-Bauer Family  
Dr. Richard W. & Lorraine Hutchinson  
Nikki & Curtis Jaffray  
Robert Jones  
Jud Hartman Gallery  
Joel Katz & Adrienne Volenik  
Virginia Roehrig Kaufmann  
Paul Kelly & Katherine O'Dell  
Ingrid Kendall  
Gilbert & Rebecca Kerlin  
Jane & David Kidder  
Graham & Michele Kinsman  
Douglas Klaucke & Natalie Moses  
Hailey Klein  
Kathy Kling & John Fearey  
George & Cynthia Knapp  
Bob & Lucia Knight  
The Koch Family  
Shepard Krech & Sheila Folliott  
Marilyn Krentzman  
Benjamin Lakin & Laura Kuhl  
Ruth Lamdan & John Wolfe  
Larry Lefkowitz & Amy Brubaker\*  
Richard & Barbara Leighton  
Ann LeRoyer & Richard McElroy  
Wendy Lewis  
Linda & Steve Lindsay  
Nancy Littlefield Stine  
Richard Littlefield  
Doug & Lauri Lyman  
Bill & Luz MacArthur  
Meg Maiden  
Michael & Kate Mainen  
Barbara & Rick Malm  
Melissa Marcello  
James L. Markos Jr.  
Maria Matthews & Michael Scott\*  
Dr. Paul & Lyn Mayewski  
Sandy & Patricia McCurdy  
Thomas McGuire  
Thom McLaughlin & Dee Seymour  
Kimball & Lisa McMullin  
Jane McNichol & James Conboy  
Mary & Steve McRae\*  
Merle B. Grindle Agency  
Ray F. Merrill  
Pat Messler  
Eugene B. Meyer  
Margaret Micholet Steele\*  
Scott & Ruth Miller  
Steven & Maria Mishkind  
William & Carolyn Mor  
Mac Morris  
Lynda Moulton  
Kathryn Munn\*  
Landere Naisbitt & Adam Chittenden  
Peter & Linda Nelson  
Burr & Robin O'Connor  
Susan O'Connor  
Sarah O'Malley\*  
John & Diane O'Shea

The Steward's Circle  
honors those who have  
created a legacy through  
Blue Hill Heritage Trust in  
their will or trust



To receive more information on joining the Steward's Circle  
please contact:

Christina B. Allen, Development Director  
chris@bluehillheritagetrust.org  
(207) 374-5118  
PO Box 222  
Blue Hill ME 04614

Every effort was made to ensure the accuracy of this list. If you find an error, please let us know, and accept our sincere apologies.



Thank You for Your Gift to Operations in 2022

Moira O'Neill  
Jenny Brillhart Page\*  
Katherine Page & Alan Hein  
Lisabeth Paradise  
Len Parrott  
Ann B. Parson  
Timothy & Elizabeth Parson  
Michael Percy & Susan Snider  
Paul & Kip Perkinson  
McKim Peterson  
Deborah Pichler  
Janet Pierce\*  
Ann Pladson & William Hale Pladon\*  
Patricia A. Poirier  
Annie Porter\*  
Elizabeth H Porter  
Judy Powell & Tom Crocker  
David Pozorski  
Janice Prior-Crofoot  
Audrey Pritchard & Lorenzo Goco  
Sharon Quinn Fitzgerald & John Fitzgerald  
Fred & Rosamond Rea  
Christine Real de Azua  
Brendon Reay & Caroline Bicks  
Paul Rittenberg\*  
Peter & Judith Robbins  
Carol Roberts & Mark Baldwin  
Mary Robinson  
Freddie Rodgers  
Rooster Brother  
Tiffany Rudloe  
John Ruger & Dee Knisley  
Michael Russell & Jeanmarie Reed  
Hugh & Heather Sadlier  
Patricia Sandilands  
Patricia Saunders\*  
Michael Schafer  
William & Joy Schmitt  
Karl & Katherine Schoettle  
Nancy Schulz  
Elsie Sealander  
Dorrance & Patty Sexton  
Barbara Shelley  
Dorinda & Dick Sherwin  
Susan Hand Shetterly  
Catherine & David Shoemaker  
Carsten Sierck  
Susan & Sandy Sierck  
Mindy & Carl Silver  
Nikos Singelis\*  
Elissa Slocum  
T. H. Butler Smythe\*  
Leslie Snow  
Susan Sokol  
Elizabeth Solet & Kevin Ross\*  
Jose M. Soriano  
Jane Soukup  
John Southard  
Joanne & Carsten Steenberg  
Amy Steffen & Linda Stern  
Thomas & Yolanda Stein  
Brenda Stevens & Rudolph Cartier Jr.

Hugh O. Stevenson  
Nancy & Ron Stoller  
Noel & Elizabeth Stookey  
Marcia & Peter Stremlau  
Silvija Strikis & Miguel Browne  
Nancy Struve  
Paul Sullivan & Jillson Knowles  
Thomas Sweeney & George Siekkinen  
Melissa Swensrud  
Thomas & Elizabeth Sylvia  
Mabel Tardif  
Twila Tardif  
Marie Taylor & Dick Teneyck  
Joan Thelwell  
Ann-Margaret Thomas  
Mr. & Mrs. Lowell S. Thomas, Jr.  
Carrie Thornburg-Bearse  
David & Janet Tilton  
Kirstin Tobiasson & David Swayze\*  
Sarah Tomkins  
Lisa & John Tyson Ennis\*  
Adele Ursone & George Matteson  
Susan & Dean Vidal  
Kyle Vietze  
Yasmin Vitalius  
Elijah Vollendorf\*  
Jeff Vollendorf  
Bob Walker  
Patrick & Laurie Wardell  
Courtney Weaver  
Hannah Webber & Greg Forrest  
Kenneth & Holly Weinberg  
Wendy L. Alpaugh, D.M.D.  
Ellen Werner  
Jeffrey & Anita Wessel  
Marjorie & Thomas Wheeler  
Tom Whittier & Chris Hedges  
Mr. G.W. Wilde  
David & Elise Wilson  
Woodie & Steve Wisebram  
Erin Witham  
Barbara Woodhouse  
Donald Worthington & Janet Bradley  
Jennie Wright  
Karen Anthony Wyatt  
David & Rosemary Wyman  
Carolyn Yoder  
Frederick Yost  
Jeffrey Young & Elizabeth Mahoney  
Katherine Young  
Sydelle Zove & Stephen Kaufman

Up to \$99

Josh & Susan Adam  
Bob & Marybeth Allen  
Jon Allen  
Lucas Allen & Chrissy Beardsley Allen\*  
Emil & Eleanor Andy  
Bagaduce Watershed Association  
Jo Barrett  
Edouard Beardsley - 2018 Intern

Mark & Martha Bell  
Trudy & Scot Bell  
Michele Benoit\*  
Helen Berger  
James Bergin & Judith Garvey  
Nancy & Warren Berkowitz  
Alan & Jane Birk  
Laura K. Blandford  
Ellen Booraem  
Boothe Family Fund  
Rich & Cheryl Boulet\*  
David Bourne  
Mollie Bourne  
Merrin Brache - 2021 Intern  
Jon Braff  
Candice Bray & Peter Smith  
Ann Brayton  
Donald Broderick & Jane Goodell  
Orin Buetens & Christienne Boisvert  
Dr. Thomas & Carolyn Bugbee  
Steve & Midge Bunney  
Aleita & William Burman  
Bill Byers  
Audrey J. Carter  
Wayne Chadburn & Edward Devito  
Susan Chambers  
Ann & Tom Chapman  
David Chapman  
Dave Chase  
Marin Cheney  
Katherine & Charles Claggett  
Henrietta Clews  
Richard & Jane Clifton  
Eben & Tara Colby  
Stephanie & Fred Cole\*  
Peter Collier  
Claire Connor  
Sarah Cox  
Jessica Crandell- 2021 Intern  
Kathy Crawford\*  
Rena Crispin\*  
Brian Crockett  
Hugh & Susan Curran  
Connie Curtin & Peter Cooperdock  
Andrew Czwakiel & Olivia French - 2020 Intern  
John Davis  
Mary Dearborn  
Leif Deetjen  
Soren Denlinger- 2019 Intern  
Ron de Paolo  
Elizabeth & Christopher Dickens\*  
Edward Dufresne & Elizabeth Lastaiti  
Abby Dunham  
Gregory Dunham & Patricia McGrath  
Dunham  
Lisa Durkee  
Anonymous  
Gregory Edwards\*  
Anne Lounsbury Ekstrom  
Elliott Architects  
Alex Emerson  
John Epstein

Chris Facq  
Sandra Farrell  
Abigail Fassnacht  
La Mason, Fete LLC  
Marion Fisher  
Nicholas Fisichelli & Shona Terrill  
Katharine Fodnaess  
Queene Hooper Foster\*  
Carolyn Friedell  
Robert Friedlander  
Friends of Walker Pond  
Steven Fuller  
Devon Funt - 2017 Intern  
Bruce & Mary Gallup  
Maggie Garfield  
Noi & Orasa Garland\*  
Drew Gattine\*  
Hayley Gibbs - 2022 Intern  
Hendrik Gideonse  
Craig Gilbert & Lila Haight Gilbert  
Donna & Jim Gilbert  
L. Paul Gilden  
Phil & Linda Glaser  
Kathy Glennon  
Leslie Goode  
Steve Greenberg  
Walter R. Greenlaw, Jr. & Beth Jackson  
John & Katie Greenman  
Arthur W. Gregg  
Carol & John Gregory  
Anne & Michael Grillo\*  
Larry Gross & Christine Skwiot\*  
Sam Guilford  
Kasha Haggarty  
Kathryn Haggerty  
Judy A. Hale  
William & Joan Hand  
Carolyn Hanke  
William Hardin\*  
Ellen Harford  
Elise Harnett  
Nancy Hathaway  
Beverly Hawkins\*  
Elizabeth Hays  
Arian Heald  
Bill & Gene Henderson  
Groves E. Herrick  
Joan MacCracken & Bob Holmberg  
Scott Howell & Sara Bushmann  
Lori & Rob Huckelbauer  
Maitland Ianiri - 2018 Intern  
Richard Kane & Melody Lewis-Kane  
Gary & Janice Kath  
Dugald & Jeanne Kell  
Theresa Kerchner & Jim Perkins  
Clinton Kilts  
John & Joanne Kimball  
Jeff & Kathleen Kloffft  
Lars Knakkegaard\*  
Arn Krugman  
Edward & Lisa Larue  
Jonathon Leiner  
Stephanie Leonardi

Jonathan Lepoff  
Douglas LeRoy  
Jerry Levit  
Steven Levy  
Apple Lieser - 2022 Intern  
James Linnane  
Margie Lutz  
Elaine MacLean  
MAE LLC  
Martha Malinowski  
Barbara Manicatide  
Adam Marcus  
Keith Mason  
Anonymous  
Perry & Pearl Mattson  
Diane Maxwell  
Susan R Mayne\*  
Jacob McCarty  
Robert McCormick  
Lindsay & Stuart McLean  
Elizabeth Miller  
John R. Miller  
Gwendolyn Miner & Craig Looney  
Bruce & Marcia Moore  
Catherine Moore\*  
Merry Moses  
Katherine Mrozicki & Bryan McLellan  
Norman & Paula Mrozicki  
Eric & Linda Murphy\*  
Thomas Murphy  
Hugh Nazor & Linda Murnik  
William & Megan Neils  
New Surry Theatre  
Joyce & Art Newkirk  
Thomas Nichols  
Richard & Lorna Nutt  
Emily O'Brien- 2022 Intern  
Lisa A. Oettinger  
Steve & Carol Orlofsky  
Gail Page & Robert Shetterly  
Clara Parkes  
Claudia Parnell  
Daniel Parrott  
Michelle Perry\*  
David & Shelley Petroy  
Heywood Petry & Patricia Cooper  
Barbara Pike  
Bob & Carol Plohr  
Mark & Martha Pokras  
David Porter  
Edwin Pyle  
Quill's End Farm  
David Quinby & Marcia Hart-Quinby  
Chris & Peggy Raphael  
David Rath & Alison Dame  
Flo Reed\*  
Cathy Rees & Ric Pomilia  
Anne Reinish  
Nancy & Jim Reinish  
Brian Rogers  
Robert A. Roth  
Marilyn & Bruce Rutland  
Bob Salesi & Janet Carpenter

Doug Salzarulo  
Ruth Saxl  
Sarah Schneider  
Susan & Curt Schneider  
Anne Schroth  
Jennifer Schroth & Jonathan Ellsworth  
John G. Schuler  
Christine Schutt  
Janet & Jerry Schwarz  
Permelia & David Sears  
June E Sendrowski  
Howard Sharp  
Mike & Pam Sharp  
Harold & Sue Shaw  
Laurence Schlachter  
Robyn & Kurt Silberstein  
Annie Silver & Robert Kimball  
Anne & Terry Simmons  
Janet Simpson  
Alexander Slive & Kaela Lee  
Stephen Smith  
Colleen Spangler  
Tracy Spencer & Hank Davis  
Catherine & Scott Springer  
Alexandra Stark  
Jane Steinkraus  
Christie Stephenson  
Troy Sterk\*  
Bridget Stevens  
Katherine Strater  
Bill & Janie Sturtevant  
Anonymous  
Bob Sullivan  
Beth & John Sundberg  
Karen & Kevin Surma  
Johanna Sweet  
Donna Tamaki  
Sherryl & Tony Taylor  
Tandy Taylor  
Barbara & Patrick Tedesco  
The Signatry  
Steven & Diana Thomas  
Robert & Judith Tredwell  
Elizabeth & Mikayla True  
Sharon Tyler  
Randall von Wedel  
Anne M. Walker  
Wanning Estate  
Zachary Wegrzyniak  
Nancy R. Werth\*  
Susan White  
Diane Wiener  
Shelly Willard  
Martha Williams  
Crayke Windsor  
Christopher Wolfe & Elizabeth Snyder  
Tenley Wurglitz  
Elizabeth & Christopher Young  
Melanie Zador  
Morgan Zenter - 2019 Intern  
Geoffrey Zentz & Emily Nash  
Karen Zimmermann

\* All-Seasons Givers

Every effort was made to ensure the accuracy of this list. If you find an error, please let us know, and accept our sincere apologies.



# BLUE HILL HERITAGE TRUST



Non Profit  
Org.  
US Postage  
PAID  
Permit #76  
Bangor, ME

## Blue Hill Heritage Trust Board of Directors

Hannah Webber, President  
Sarah King, Vice-President  
Marcia McKeague, Treasurer  
George Hurvitt, Secretary

Norman Alt  
Mary Barnes  
John Boit  
Peter Clapp  
Randy Curtis  
Samantha Haskell  
Brooke Parish  
Brendan Reay  
Ruth Ryan  
Kate Tomkins

## Thank You for Your Support!

